

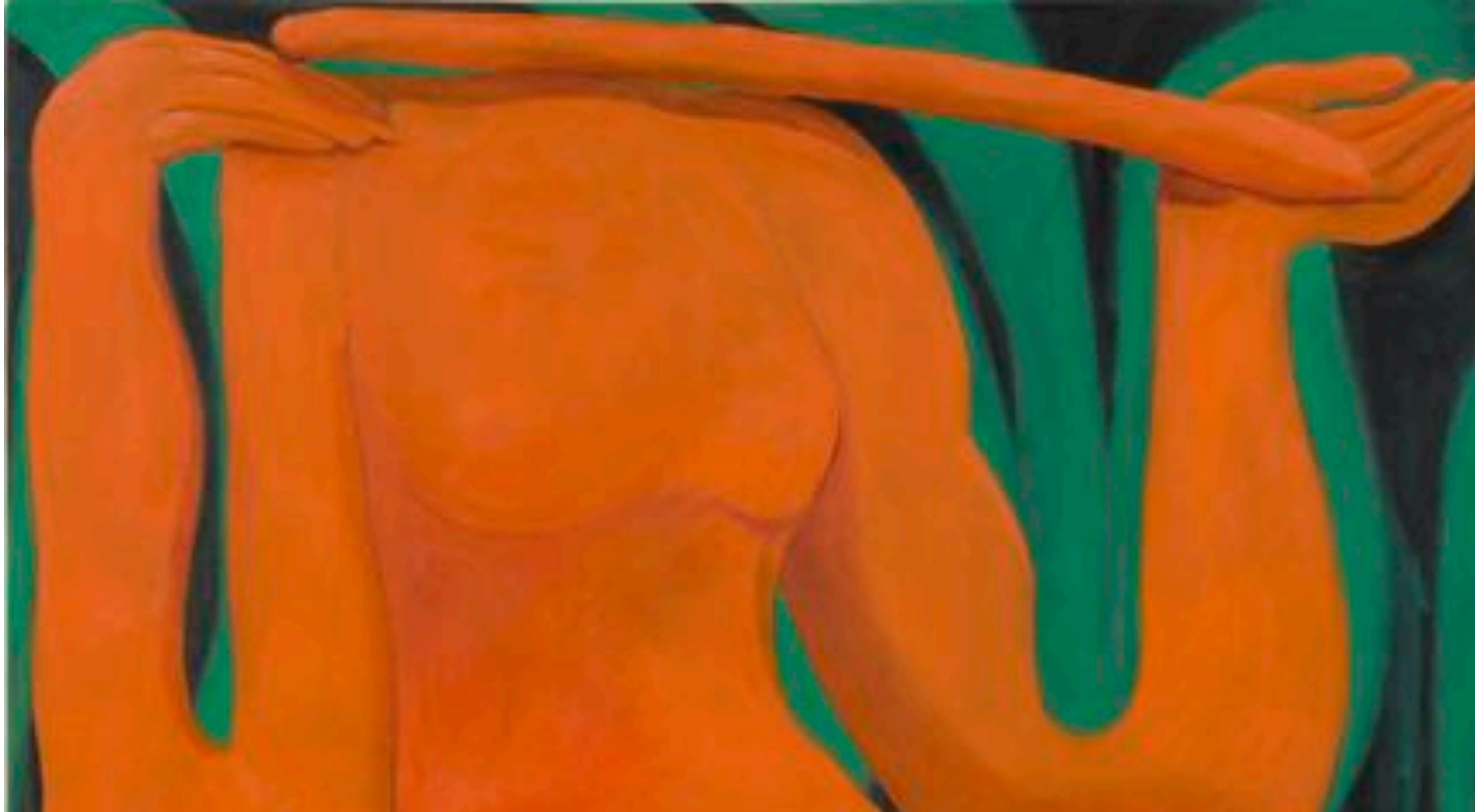
An abstract painting featuring a couple in a warm embrace. The figures are rendered in bold, flat colors: bright yellow for the bodies and soft pink for the clothing. The background is a mix of muted greens and purples, creating a dreamy, romantic atmosphere. The style is reminiscent of mid-century modern art.

DELLASPOSA

TAHNEE LONSALE

TENDER LOIN

5 JUNE - 27 JULY 2019



TENDER LOIN

Tahnee Lonsdale's compelling paintings address contemporary issues that directly confront relationships, sex, and female empowerment. Her paintings are a mirror into our world - presenting a personal journey that balances the ambiguous roles of a 21st-century mother, woman, artist. Where women experience a push and pull interplay between internalised roles and external demands, they are entangled and embroiled in a history of expectations wedded to a nurturing and delicate persona, while existing in an expansive space for women's inherent independence, power, and strength.

Tender Loin is a title that calls the mind the carnal nature of our flesh and bodies, with raw emotions and desires. Seduction is expressed as an electric current charging through this new series of paintings. Sensuality and vitality are complimented by instances of insecurity, intimacy and love - so much a subject in the artist's work. As with the title of the show, the title of her paintings - Awkward Romance, Under You, Stand by Me - refer to the rhythm of our daily lives, relationships, impulses, and yearnings.

Concerned with the representation of women and feminism, the artist considers the complexities of the human condition and personal relationships in her work. Lonsdale gives a voice to her position: 'For me, being a woman is integral to my work,' Lonsdale says, 'it is my main resource.' Her vivid paintings speak volumes by examining how gender roles and relationships play out behind closed doors.

The exhibition sees Lonsdale's protest of the here and now with expressive, bending, shape-shifting nudes that represent the body as a locus of experience rather than a site observed. Instead of indulging in mimesis, she paints the figure with a persuasive force that can change one's stance according to the different values and systems the creator attributes to them.

Lonsdale's artistic process begins with an assemblage of symbolic structures and soft sculptures that are physical manifestations of her ideas. She often photographs configurations of discarded furniture as the basis for her work. 'They have a human quality', Lonsdale states 'there is a sense that I have disturbed an intimate moment. In the act of documenting these scenes, I have become the voyeur.' The use of found



furniture as sculptural assemblage suggests a presence of the human form without the figure. It is a way of addressing the human condition in its contemporary state without addressing the classical heroic form.

Following in a tradition of women artists creating soft sculptures - such as Dorothea Tanning and Louise Bourgeois - there are allusions to an almost Surrealist sensibility. Lonsdale shares a mutual interest in the anthropomorphic forms that are stuffed and sewn. Her works unsettle the status quo for traditional ideas of sculpture and painting; responding as they do to the cold, pristine marble and bronze counterparts of art past, by offering soft, malleable forms that react to gravity in a more languid manner. These three-dimensional pieces are the genesis for whimsical images and narratives in her paintings. It is only after this first ritual of creation is completed that Lonsdale takes up the brush to begin work on her canvas.

While her paintings often bear a resemblance to the original assemblage, Lonsdale says 'others have unravelled into purely figurative works, varying between lethargic oafs copulating and lithe bodies in sensual acts of intimacy. They still bare the bones of their domestic origins, but their curves and shapes have transmuted to become scenes of an often sexual nature.'

In this exhibition, Lonsdale presents an ensemble of contemporary figures that are fluid, progressive, and open to change. Sprawling, alone, or unravelling - these are lucid representations of the human condition conveyed with a visceral energy reverberating on the canvas. Her figures are rendered almost genderless and loosely repetitive, maintaining a compelling balance between order and chaos. There are invariably moments of entanglement; entwined bodies dance and double-over. In other moments, a sole body moves for independence.

Colour is a material basis for the artist's conceptual framework. Lonsdale paints a radiant scene of pneumatic anatomies with layered brushwork. The vivid strobe of yellow, so long a colour associated with the transgressive avant-garde, decadence, and beauty is a strong presence as the luminescence lifts the spirit and raises one's vision.

Lonsdale creates her work with raw and impulsive energy. Absorbing worldly materials and images, she brings representation into her semi-abstract paintings by drawing from her instinctive and highly personal visual language. She understands that image is both depiction and iconography. Her irreverent engagement with figures on the canvas appears as of hieroglyphs in technicolour, highlighting an elastic nature of progress. 'The women in my paintings seem to be evolving and gaining strength', observes Lonsdale, 'Like their bulky origins, they remain robust, yet soft in their femininity.'

Lonsdale's paintings present to us an impression of our times: a complex journey through multitudes and dichotomies. One that is neither simple nor sessile, but in a state of flux, ever challenging and evolving.

TENDER LOIN

AWKWARD ROMANCE

TAHNEE LONSDALE

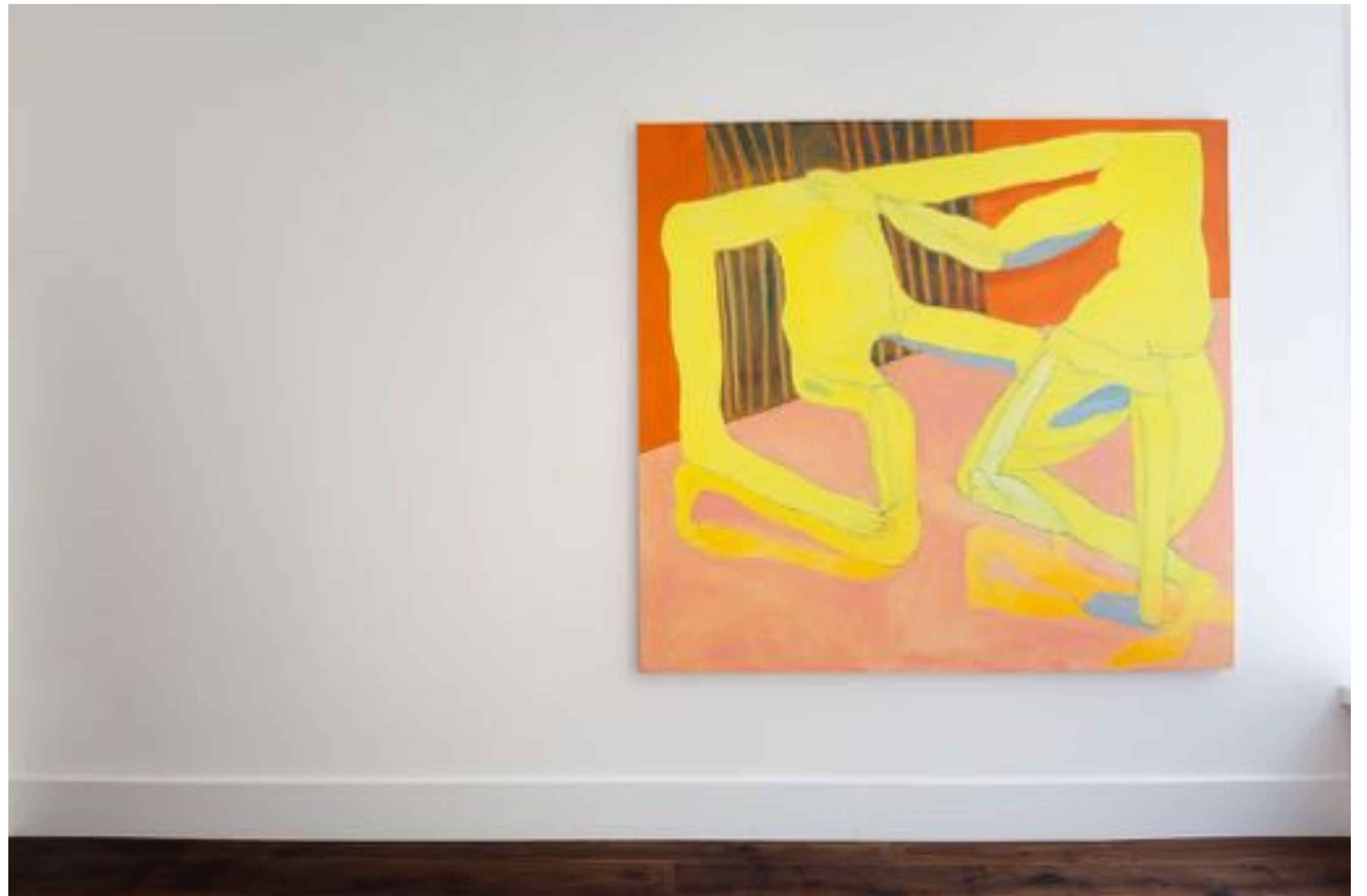
Awkward Romance, 2018

Oil on canvas

190 x 210



TENDER LOIN





TAHNEE LONSDALE

Embracing Yellow Nudes, 2018

Oil on canvas

139.7 x 127 cm

TENDER LOIN

EMBRACING YELLOW NUDE



TENDER LOIN

STAND BY ME

TAHNEE LONSDALE

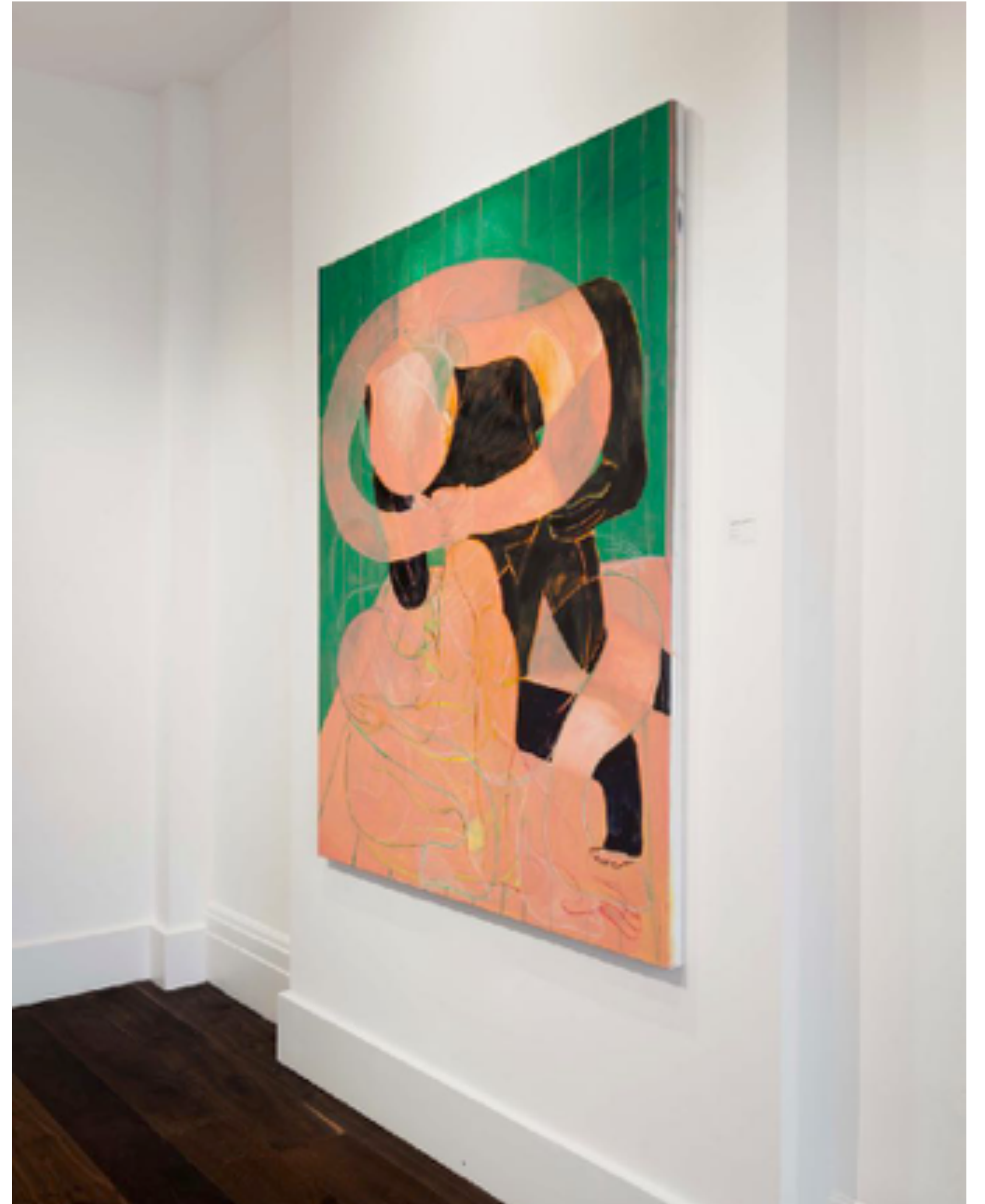
Stand By Me, 2019

Oil on canvas

162.5 x 127 cm



TENDER LOIN





TAHNEE LONSDALE

Couple, 2018

Oil on canvas

139.7 x 127 cm

TENDER LOIN

COUPLE



TENDER LOIN

TENDER LOIN

SYMBIOTIC

TAHNEE LONSDALE

Symbiotic, 2018

Oil on canvas

160 x 170.2 cm



TENDER LOIN





TAHNEE LONSDALE

Posing Yellow Figure, 2018

Oil on canvas

190 x 210

TENDER LOIN

POSING YELLOW FIGURE

TENDER LOIN



TENDER LOIN

LOVE AND SUPPORT

TAHNEE LONSDALE

Love and Support, 2018

Oil on canvas

129.5 x 162.6 cm



TENDER LOIN





TAHNEE LONSDALE

Stick Bearer, 2018

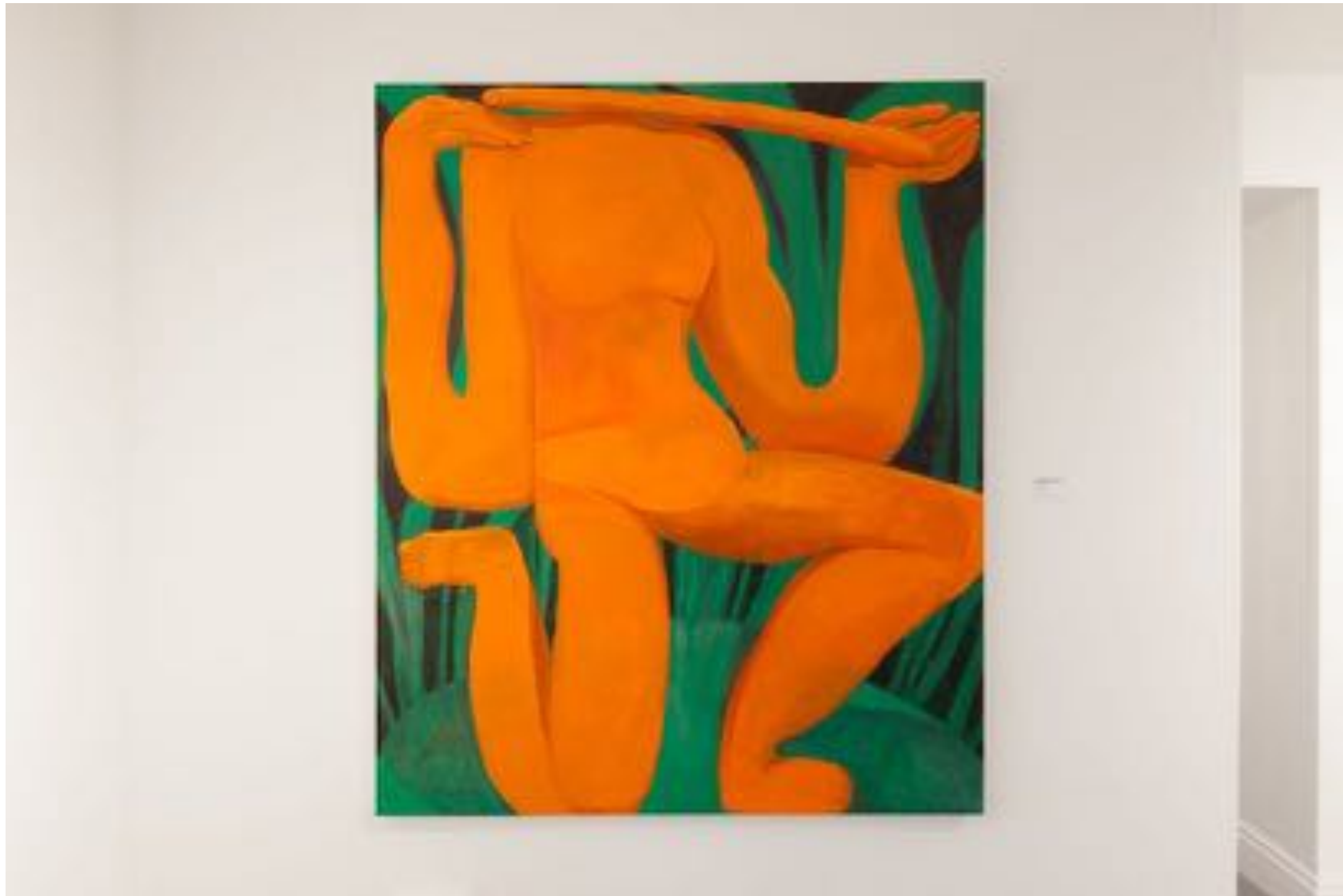
Oil on canvas

132.1 x 111.8 cm

TENDER LOIN

STICK BEARER

TENDER LOIN



———— TENDER LOIN

UNDER YOU

TAHNEE LONSDALE

Under You, 2018

Oil on canvas

129.5 x 119.4 cm



TENDER LOIN





TAHNEE LONSDALE

Downward Despair, 2018

Oil on canvas

56 x 56 cm

TENDER LOIN

DOWNWARD
DESPAIR



TENDER LOIN

MR.

TENDER LOIN

TAHNEE LONSDALE

Mr, 2018-2019

Oil on canvas

100 x 85.5 cm





TAHNEE LONSDALE

Mrs, 2018-2019

Oil on canvas

100 x 81 cm

MRS.

TENDER LOIN

Tahnee Lonsdale's paintings represent the newest direction in semi-abstract painting. Whimsical figures, architecture, and other objects populate vibrant fields of colour that suggest anything from domestic interiors to wild landscapes.

At once both detailed and dreamy, Lonsdale's work leaves just enough to the imagination. A narrative, often involving a journey of sorts, is clearly implied, though it is up to the viewer with the aid of Lonsdale's colorful titles, to piece together all the elements of the story being told. According to the artist, this body of work embodies an eternal searching, whether that be literally or on a spiritual level.

Tahnee Lonsdale holds a BA from the Byam Shaw School of Art in London. Since graduating in 2007, she has been short-listed for both the Dazed and Confused Emerging Artist Award and "100 Painters of Tomorrow."

Her work has been exhibited widely in her native Britain, as well as in the United States at venues such as the Orange County Center for Contemporary Art in Santa Ana, CA. Lonsdale currently lives and works in Los Angeles.

TAHNEE
LONSDALE



EXHIBITIONS

SOLO SHOWS

2019 Tender Loin, Dellasposa Gallery, London
2019 Tear Here, 00.LA, Los Angeles
2017 Furnished, Roberta Moore Contemporary, London
2016 Pipe Dreams and Rabbit Holes, De Buck Gallery, New York
2014 Your Epoche, Roberta Moore Contemporary and Imitate Modern, London
2013 Waiting for Entry into that Holy Place, Roberta Moore Contemporary, London
2011 Impressions of a Wind-Up Bird, The Hemel, London

GROUP SHOWS

2019 Run Straight Through, Torrance Art Museum, USA
2019 Rainy-Day Canapé, LM Gallery, Italy
2019 Oneiric Landscapes, 5 Car Garage, LA, USA
2019 London Art Fair, Dellasposa , London, UK
2018 Site Unseen, Dellasposa, London, UK
2018 Zona Maco, De Buck Gallery, Mexico
2018 Arusha Gallery, London Art Fair, London, UK

2017 10 x 10, Young Space, curated by Kate Mothes
2017 La Women, Saatchi Art, Los Angeles
2017 Settling the Ghost, Standard Projects / Young Space curated by Kate Mothes
2017 Summer Show, De Buck Gallery, New York
2017 The Amorist, Arusha Gallery, Edinburgh
2016 Fresh Faces, Saatchi Art, Los Angeles
2015 De Buck Gallery, Wynwood, Miami - Miami Basel
2015 Infero, Rook and Raven, London
2015 Wanderlust, Lacey Contemporary, London
2014 National Open Art, Somerset House, London
2014 Continental Shift, Saatchi Gallery, London
2014 Spring Fever, Saatchi Art, Hyatt Churchill, London
2012 Arthaus, Degree Art, Vyner St., London
2012 London Calling, Occca, California
2011 Literal.Eyes, London Miles Gallery, London
2011 Momac, Roberta Moore Contemporary, Gloucester
2011 Debut Contemporary, London
2010 Lloyd Gill Gallery, Somerset

DELLASPOSA

Dellasposa is where art and culture are born of the aesthetic enjoyment and intellectual nourishment we derive through our visual world.

Founded in 2016, the gallery today represents contemporary and modern artists from around the world united by their conceptual rigour and quality, timeless works of art.

Dellasposa offers a bespoke art advisory service devoted to the notion of cross-collecting and tailored to collectors aesthetic interests and ambitions. We sincerely believe that trust and transparency is the foundation for everything we do and therefore place considerable value on the independent and impartial art advisory service we continue to offer to our clients. Through the re-examination of connoisseurship in our contemporary times, we encourage you to explore new ways of looking and thinking about art.

Alongside the contemporary artists represented by the gallery, Dellasposa also specialises in modern masters from the 20th century - from the School of Paris, Abstract Expressionism, Pop Art, to Modern and Young British Artists.

We are dedicated to sharing the most thought-provoking modern and contemporary artworks that inspire and create conversations for a deeper appreciation of art.

C O N T A C T

DELLASPOSA GALLERY

2A Bathurst Street, Bayswater, W2 2SD
London, United Kingdom

Tuesday - Friday 10:00 - 18:00
Saturday 11:00 - 17:00
Sunday By Appointment

www.dellasposa.com

+44 (0)203 286 1017
info@dellasposa.com



VISIT US

We are based in the very heart of London. We invite you to visit us - whether you are a collector, art lover, or simply curious. If you are interested in a special viewing by appointment, please do get in touch and we can arrange a most suitable time for you.

CONTACT US

Jessica Corbet McBride
Founder + Director
jessica@dellasposa.com

Julian Phillimore
Founder + Director
julian@dellasposa.com

